



OPTIONAL AURORA FACADE

ELWOOD 156 MKI

10M+

3  2  1 



OPTIONAL ECLIPSE FACADE



OPTIONAL NOVA FACADE



OPTIONAL SOLSTICE FACADE



OPTIONAL ZENITH FACADE

HOTONDO HOMES

FOREVER
SANCTUARY

• Forever part of the family •

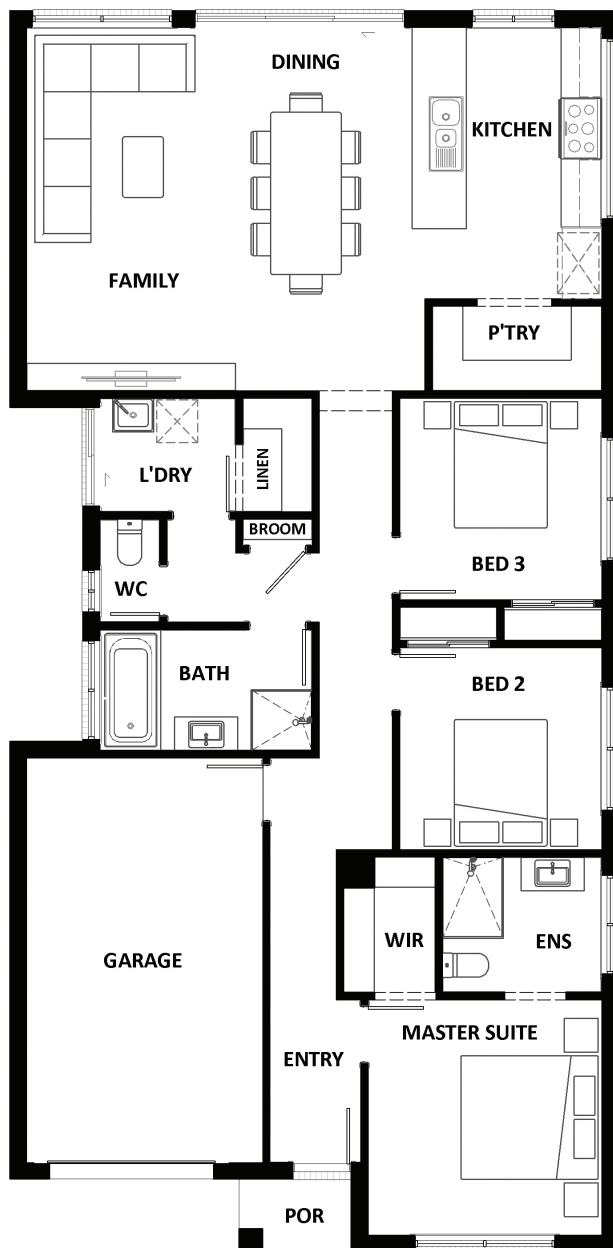
 **Hotondo Homes**

1800 677 156 | hotondo.com.au

ELWOOD 156 MKI

The Elwood 156 is a sensational and sensible design for narrow allotments. The master suite is located at the front of the home and includes a walk-in-robe and ensuite. Sweeping around the master suite are the remaining two bedrooms. With the kitchen, dining and family area located at the rear of the home this open space creates the perfect dining and entertaining sanctuary. This design is available in four layout versions and larger 173 and 197 sizes.

LOT WIDTH: 10M+



HOME AREAS (m²)

Residence	130.64
Garage	23.56
Porch	1.79
Total	155.99
Total (sqsq)	16.79

OVERALL DIMENSIONS (m)

Width	8.99
Length	18.35

ROOM DIMENSIONS (m) width x length

Master Suite	3.47 x 3.50
Bedroom 2	3.00 x 3.00
Bedroom 3	3.00 x 3.00
Family	3.09 x 5.39
Dining	2.81 x 5.39
Garage	3.50 x 6.00

HOTONDO HOMES
**FOREVER
 SANCTUARY**
Forever part of the family.

Hotondo Homes

1800 677 156 | hotondo.com.au

#The floor plans shown are provided for illustrative purposes only. They are not drawn to scale. The dimensions provided of "width" and "length" are the actual dimensions of the completed house including Alfresco areas (where applicable). No allowance has been made for any council regulations or estate requirements. It is the home owner's responsibility to ensure that the house will fit on their land and that all applicable council regulations and estate requirements are met. The image of each façade is for illustrative purposes only and may contain items that are examples of upgrade options which may be included at additional cost, for example: Roof tiles, Panel lift garage door, front entry door, outdoor light, floor coverings, all external paving and tiling and landscaping. Images may also contain items not supplied by Hotondo Homes including all furniture & wall hangings.